

AL-SAUDI
Real Estate Development Co.

METHAQ TOWER



METHAQ TOWER

Methaq Tower is a high rise building, located in the heart of Amman, Abdoun. With Premium finishing and high standards to serve our clients and reflect their image in the best way possible.



LOCATION

Methaq Tower is located in Abdoun on one of the most important streets in Amman. This street is considered a major connecting point.

It's a hub for major companies in Amman and it's a huge attraction for multinational companies. It's the most desirable commercial area in Amman, and it's a spectacular location to start a business or move your current office to.



INTERIOR FEATURES

- Pre-insulated glass facade curtain wall including push windows.
- Pre-insulated air conditioning and heating units.
- Panoramic view of Prs. Basmah Street.
- Very sufficient high design (Open floor, without columns).
- Porcelain floorings 75x75 cm (Made in Spain).
- Ceramic walls (Made in Spain).
- Wall hung Durvait bathroom sets (Made in France).
- Grohe hidden flush sets (Made in Germany).
- Maple wood doors.
- Fully painted walls.
- Electricity board and fixtures - Le Grand (Made in France).
- 120+ inner parking lots.

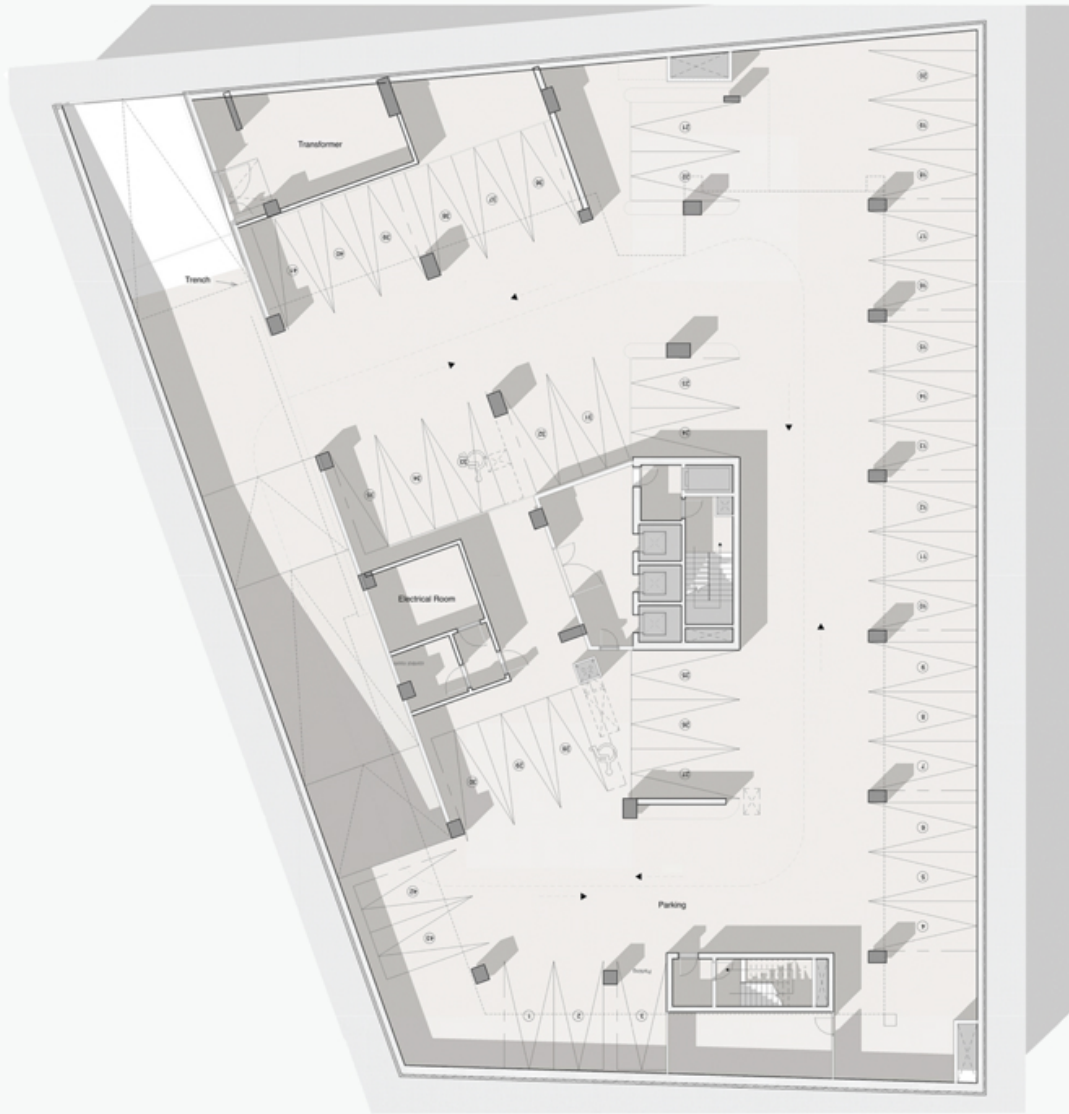


EXTERIOR FEATURES

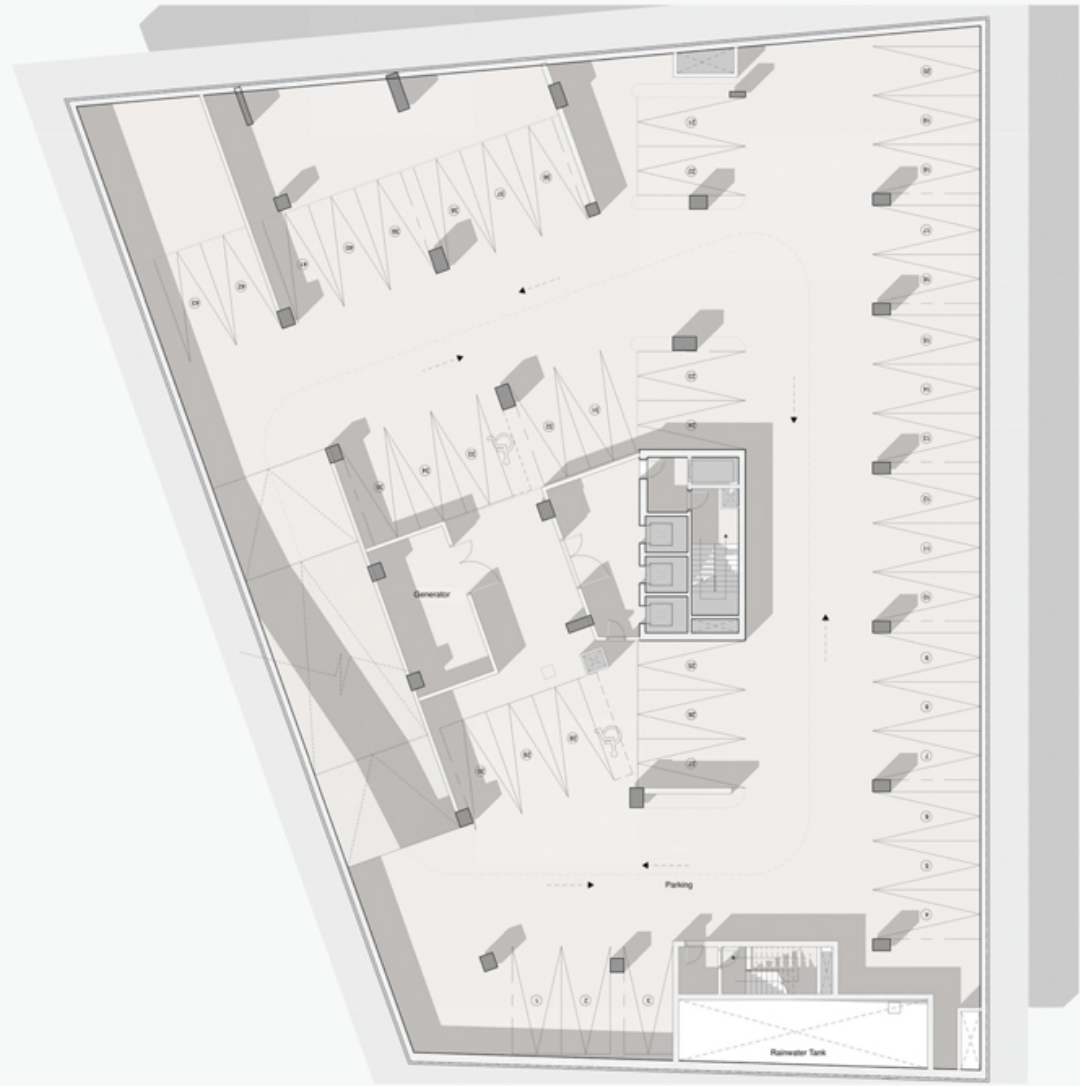


- Fully ventilated basements
- Outdoor interlock entrances.
- High quality Taffouh stone.
- Thermal insulated outer walls.
- Water treated roof and stone facade.
- Spanish marble floorings for entrances and common areas.
- Granite staircase steps and flooring.
- Four high speed Italian lifts.
- Availability for visitors' car.
- Security 24/7.
- Cleaning service.
- Firefighting automated sprinklers smoke detectors

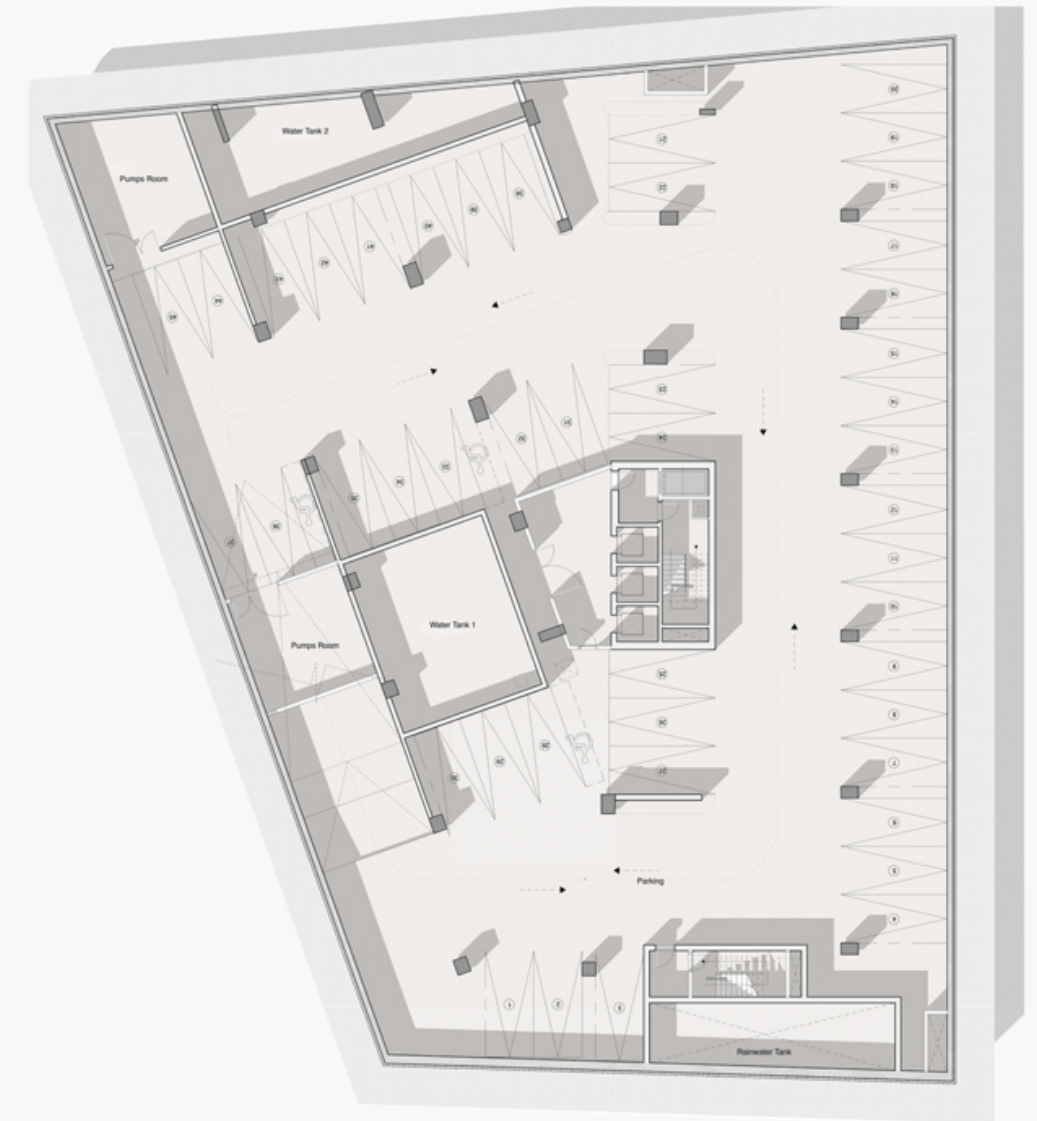
CELLARS



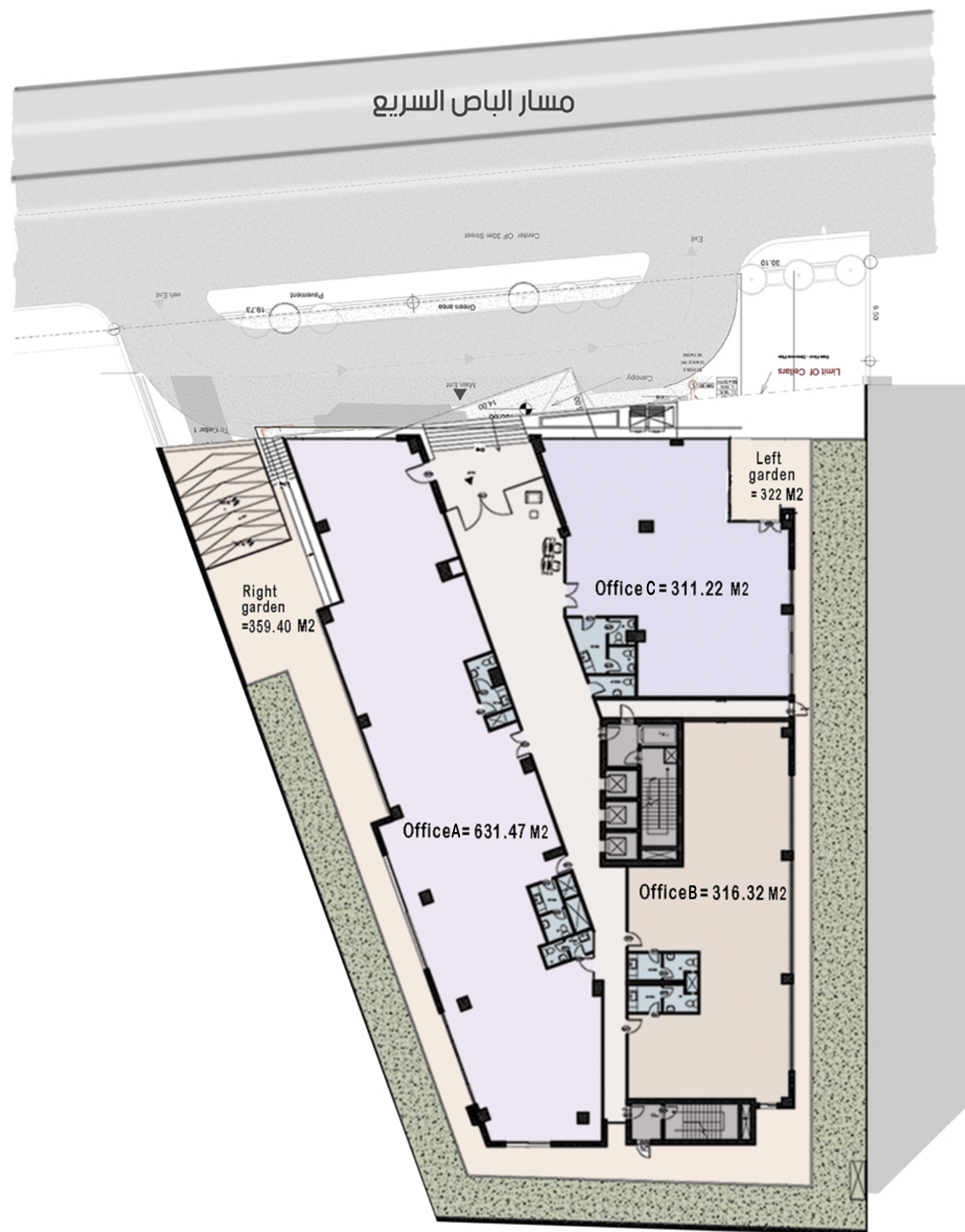
Cellar 1



Cellar 2



Cellar 3



*Areas are inclusive of services

FLOOR PLAN

	Size
A	631.47
B	316.32
C	311.22

*Areas are inclusive of services

GROUND FLOOR

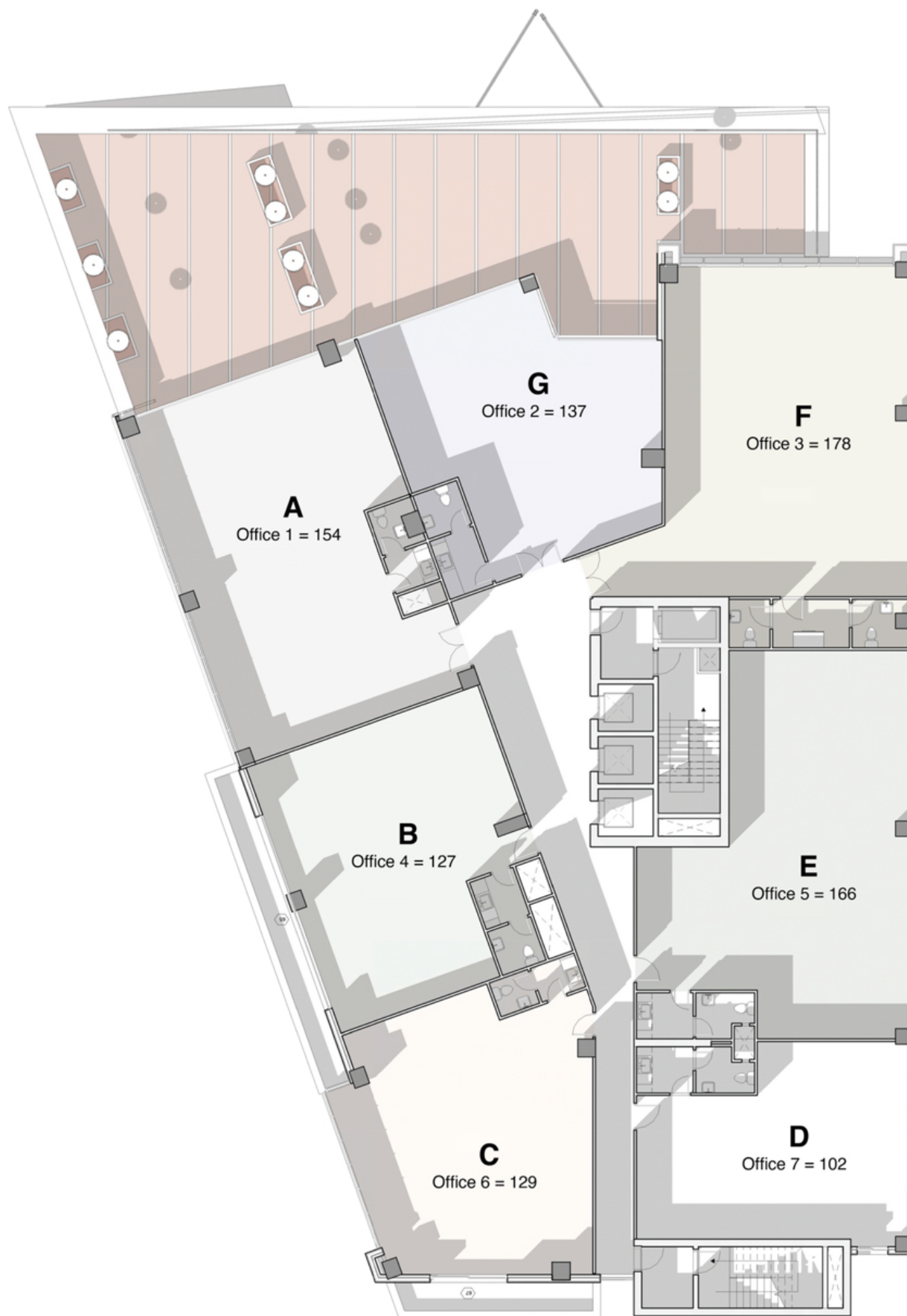


FLOOR PLAN

	Size	Parking	View
A	275	3	Prs. Basmah St.
B	153	2	Prs. Basmah St.
C	128	1	Prs. Basmah St.
D	99	1	Side View
E	161	2	Side View
F	223	3	Prs. Basmah St.
G	220	3	Side View

*Areas are inclusive of services

FIRST FLOOR

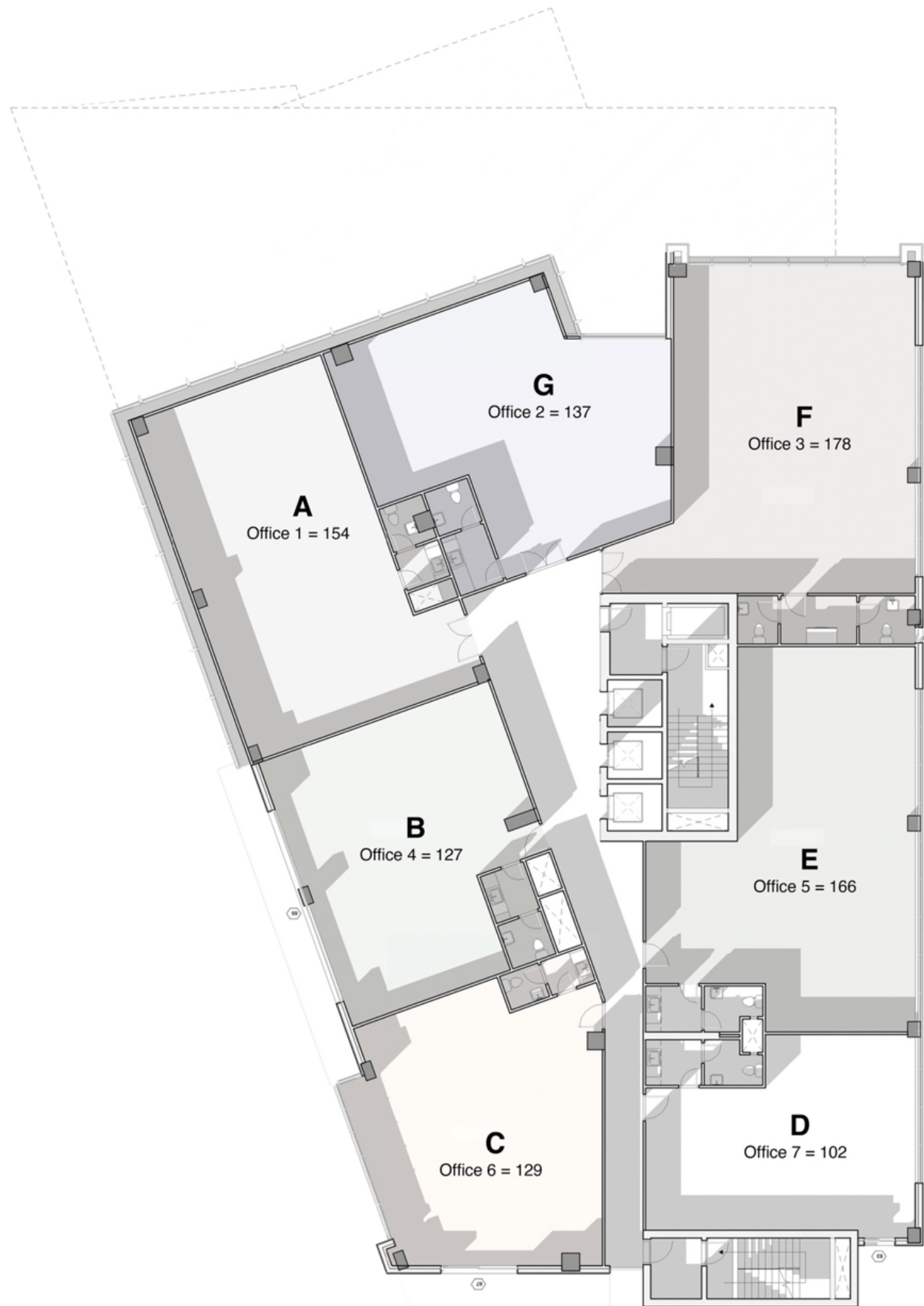


FLOOR PLAN

	Size(m)	Parking	View
A	154	2	Prs. Basmah St.
B	127	1	Prs. Basmah St.
C	129	1	Prs. Basmah St.
D	102	1	Side View
E	166	2	Side View
F	178	2	Prs. Basmah St.
G	137	1	Side View

*Areas are inclusive of services

SECOND FLOOR



FLOOR PLAN

	Size(m)	Parking	View
A	154	2	Prs. Basmah St.
B	127	1	Prs. Basmah St.
C	129	1	Prs. Basmah St.
D	102	1	Side View
E	166	2	Side View
F	178	2	Prs. Basmah St.
G	137	1	Side View

*Areas are inclusive of services

TYPICAL FLOOR

OUR SPECIAL CLIENTS





SINCE 1985

AL-SAUDI

Real Estate Development Co.

THANK YOU!



07 9 999 0330



info@alsaudigroup.com



www.alsaudigroup.com



Al-Saudi Real Estate Development Co.



alsaudi.co

